

EV2021  
STELLANTIS DAY



This document contains forward-looking statements. In particular, statements regarding future financial performance and the Company's expectations as to the achievement of certain targeted metrics, including revenues, industrial free cash flows, vehicle shipments, capital investments, research and development costs and other expenses at any future date or for any future period are forward-looking statements. These statements may include terms such as "may", "will", "expect", "could", "should", "intend", "estimate", "anticipate", "believe", "remain", "on track", "design", "target", "objective", "goal", "forecast", "projection", "outlook", "prospects", "plan", or similar terms. Forward-looking statements are not guarantees of future performance. Rather, they are based on the Group's current state of knowledge, future expectations and projections about future events and are by their nature, subject to inherent risks and uncertainties. They relate to events and depend on circumstances that may or may not occur or exist in the future and, as such, undue reliance should not be placed on them.

Actual results may differ materially from those expressed in forward-looking statements as a result of a variety of factors, including: the impact of the COVID-19 pandemic; the ability of the Group to launch new products successfully and to maintain vehicle shipment volumes; changes in the global financial markets, general economic environment and changes in demand for automotive products, which is subject to cyclical; changes in local economic and political conditions, changes in trade policy and the imposition of global and regional tariffs or tariffs targeted to the automotive industry, the enactment of tax reforms or other changes in tax laws and regulations; the Group's ability to expand certain of their brands globally; its ability to offer innovative, attractive products; its ability to develop, manufacture and sell vehicles with advanced features including enhanced electrification, connectivity and autonomous driving characteristics; various types of claims, lawsuits, governmental investigations and other contingencies, including product liability and warranty claims and environmental claims, investigations and lawsuits; material operating expenditures in relation to compliance with environmental, health and safety regulations; the intense level of competition in the automotive industry, which may increase due to consolidation; exposure to shortfalls in the funding of the Group's defined benefit pension plans; the ability to provide or arrange for access to adequate financing for dealers and retail customers and associated risks related to the establishment and operations of financial services companies; the ability to access funding to execute the Group's business plans and improve their businesses, financial condition and results of operations; a significant malfunction, disruption or security breach compromising information technology systems or the electronic control systems contained in the Group's vehicles; the Group's ability to realize anticipated benefits from joint venture arrangements; disruptions arising from political, social and economic instability; risks associated with our relationships with employees, dealers and suppliers; increases in costs, disruptions of supply or shortages of raw materials, parts, components and systems used in the Group's vehicles; developments in labor and industrial relations and developments in applicable labor laws; exchange rate fluctuations, interest rate changes, credit risk and other market risks; political and civil unrest; earthquakes or other disasters; the risk that the operations of Peugeot S.A. and Fiat Chrysler Automobiles N.V. will not be integrated successfully and other risks and uncertainties.

Any forward-looking statements contained in this document speak only as of the date of this document and the Group disclaims any obligation to update or revise publicly forward-looking statements. Further information concerning the Group and its businesses, including factors that could materially affect the Group's financial results, is included in the Group's reports and filings with the U.S. Securities and Exchange Commission, AFM, CONSOB and AMF.



# CUSTOMERS NEEDS & EXPECTATIONS

# GROW EAST

STELLANTIS LEV MIX\* EXPECTED TO GROW FAST



2021 14%

4%

2030 70%+

40%+

\* Forecasted LEV mix on total Stellantis passenger car and light-duty truck sales

# CUSTOMERS

## EXCEEDING CUSTOMERS EXPECTATIONS



### ECO CONSCIOUSNESS

**64%**

of people worldwide consider "preserving the environment" as most important value

### EV RANGE WILL FIT CUSTOMERS

**80%**

of customers in the **small cars segment**

**90%**

of customers in the **compact and mid size cars segment**

**100%**

of customers in the **LCV**

### AFFORDABILITY

FROM 2026  
EV TOTAL COST OF  
OWNERSHIP WILL BE  
EQUAL TO ICE





# STELLANTIS BRANDS' ATTRIBUTES & ELECTRIFICATION

# STELLANTIS



**IT'S ONLY GREEN WHEN  
IT'S GREEN FOR ALL**



**HEATING UP PEOPLE,  
BUT NOT THE PLANET**



**CITROËN ELECTRIC:  
WELL-BEING FOR ALL!**

COMMERCIAL VEHICLES

**THE GLOBAL LEADER IN  
E-COMMERCIAL VEHICLES**

# STELLANTIS



O P E L



VAUXHALL

**GREEN IS THE NEW COOL**



**TURNING SUSTAINABLE MOBILITY INTO QUALITY TIME**



# STELLANTIS



**FROM 2024, ALFA BECOMES  
ALFA E-ROMEO**



**THE MOST ELEGANT WAY  
TO PROTECT THE PLANET**



DS AUTOMOBILES

**THE ART OF TRAVEL,  
MAGNIFIED**



*Maserati*

**THE BEST IN  
PERFORMANCE LUXURY,  
ELECTRIFIED**

# STELLANTIS



**CLEAN TECHNOLOGY FOR A NEW  
GENERATION OF FAMILIES**

**DODGE**  
**TEAR UP THE  
STREETS...NOT THE PLANET**



**RAM**

**BUILT TO SERVE A  
SUSTAINABLE PLANET**

**Jeep**  
**ZERO EMISSION FREEDOM**



# COMMERCIAL VEHICLES

# COMMERCIAL

## COMMERCIAL VEHICLES

**A GLOBAL KEY PLAYER  
IN CV BUSINESS**



**IN EUROPE**

**#1**

**IN NORTH AMERICA**

**#3**

STRONG AMBITION TO BECOME  
WORLDWIDE NUMBER 1  
IN e-COMMERCIAL VEHICLES

**CLEAR ELECTRIFICATION ROADMAP  
LEVERAGED BY SYNERGIES**

**100%**

VAN RANGE ELECTRIFIED IN 2021

A FULL BEV VAN RANGE IN EUROPE  
MIDSIZE & LARGE BEV VAN ON THE ROAD  
COMPACT BEV VAN BY END OF THIS YEAR



**ACCELERATING**

EU LARGE VAN AS ENABLER FOR US RAM PROMASTER

**FUEL CELL IS REALITY**

MIDSIZE FUEL CELL VAN FIRST DELIVERIES BY END OF 2021

**“NO COMPROMISE”  
AS TOP COMMITMENT**

ADDRESSING VAN & PICK UPS  
CUSTOMER EXPECTATIONS WHEN  
SWITCHING TO ELECTRIC

WIDTH AND DEPTH OF THE RANGE

BEST-IN-CLASS CAPABILITY,  
PERFORMANCE AND PRODUCTIVITY

CONVERSION-FRIENDLY PLATFORMS

#1 CUSTOMER EXPERIENCE :  
TCO / SERVICES / NETWORK  
COVERAGE



# THE TECHNOLOGY

# CUSTOMER-CENTRIC

## CUSTOMER-CENTRIC APPROACH



MEET ALL CUSTOMERS  
EXPECTATIONS



ENHANCE  
OUR BRANDS DNA



OFFER SUSTAINABLE &  
AFFORDABLE MOBILITY



EVOLVE &  
INNOVATE

# FULL BEV

## 4 FULL BEV PLATFORMS

### STLA SMALL



EFFICIENT CITY  
MOBILITY

### STLA MEDIUM



PREMIUM  
VEHICLES

### STLA LARGE



AWD PERFORMANCE  
& AMERICAN MUSCLE

### STLA FRAME



CAPABILITY &  
PRACTICALITY

# LEADING TO CLASS-LEADING PERFORMANCE

## BEST-IN-CLASS KPIS

OVER 800 KILOMETERS OR 500 MILES OF RANGE

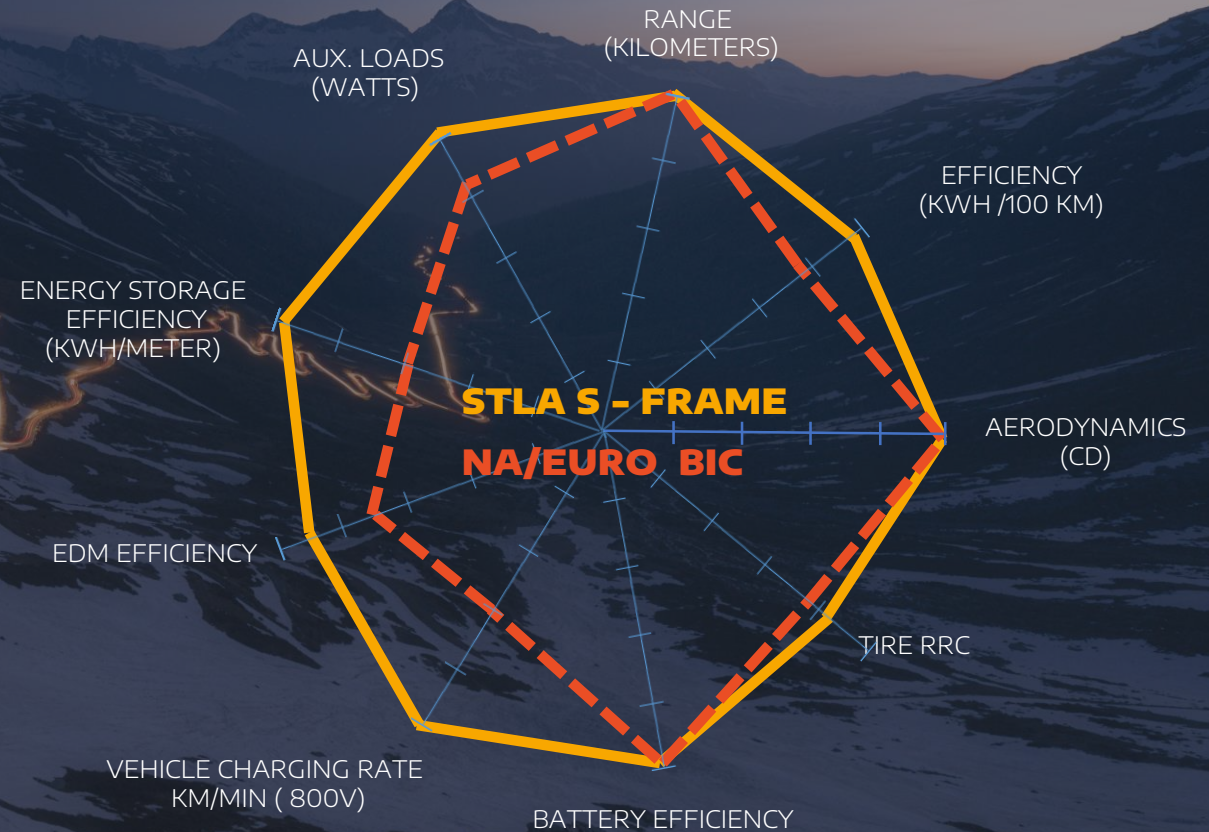
BEST-IN-SEGMENT EFFICIENCY FOR ENERGY DEMAND IN ALL PLATFORMS

BEST-IN-CLASS EFFICIENCY: UNDER 12.0 KWH/100 KM, OR 4.3 MILES PER KWH IN THE U.S. MARKET

ACCELERATION FROM 0 TO 100 KM/H (62 MPH) IN AS LOW AS 2 SECONDS

CLASS-LEADING FAST CHARGING: 20 MILES/MIN OR 32 KM/MIN

## STLA BEV ARCHITECTURE VS. BEST IN CLASS 2024 FUTURED





# FUTURE-PROOF STRATEGY

BASED ON FLEXIBILITY

**PLATFORMS DESIGNED FOR INTERCHANGEABILITY OF**

BATTERY CELL CHEMISTRY,  
ELECTRIC DRIVE MOTORS,  
POWER INVERTERS AND  
SOFTWARE CONTROL



# CONTROL

# FUTURE-PROOF STRATEGY

BASED ON FLEXIBILITY



**ABLE**  
ABLE TO

**UPGRADE  
HARDWARE  
& SOFTWARE  
OVER THE  
LIFECYCLE**

**ENHANCE  
COMPETITIVENESS,  
COST, EFFICIENCY,  
WEIGHT,  
CAPABILITIES**

# FUTURE-PROOF STRATEGY

BASED ON FLEXIBILITY

**READY**  
**READY TO EXTEND THEIR LIFE**  
**INTO THE NEXT DECADE**



# FUTURE-PROOF STRATEGY

BASED ON COLLABORATION

**ACC**

**ARCHER**

**FOXCONN**





# PLATFORMS

# 4 FULL BEV PLATFORMS

TO SUPPORT MARKET & CUSTOMER NEEDS

**4 BEV BY DESIGN PLATFORMS**

**HIGH ENERGY DENSITY & EFFICIENT BATTERIES**

**OPTIMIZED SEGMENTATION FOR FULL MARKET COVERAGE**

**CROSS SHARED COMPONENTS & SYSTEMS**

STLA  
SMALL

**500 km  
300 miles**

STLA  
MEDIUM

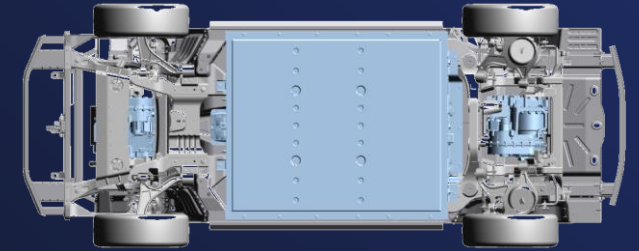
**700 km  
440 miles**

STLA  
LARGE

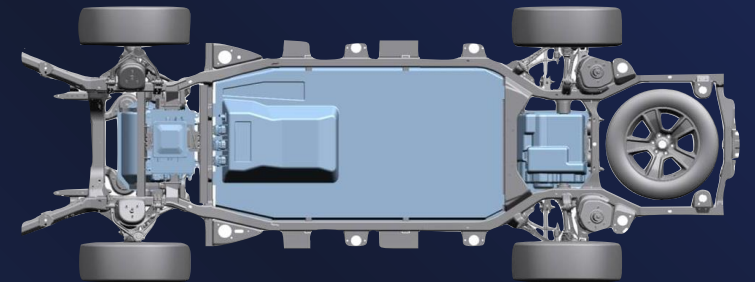
**800 km  
500 miles**

STLA  
FRAME

**800 km  
500 miles**



3 UNIBODY

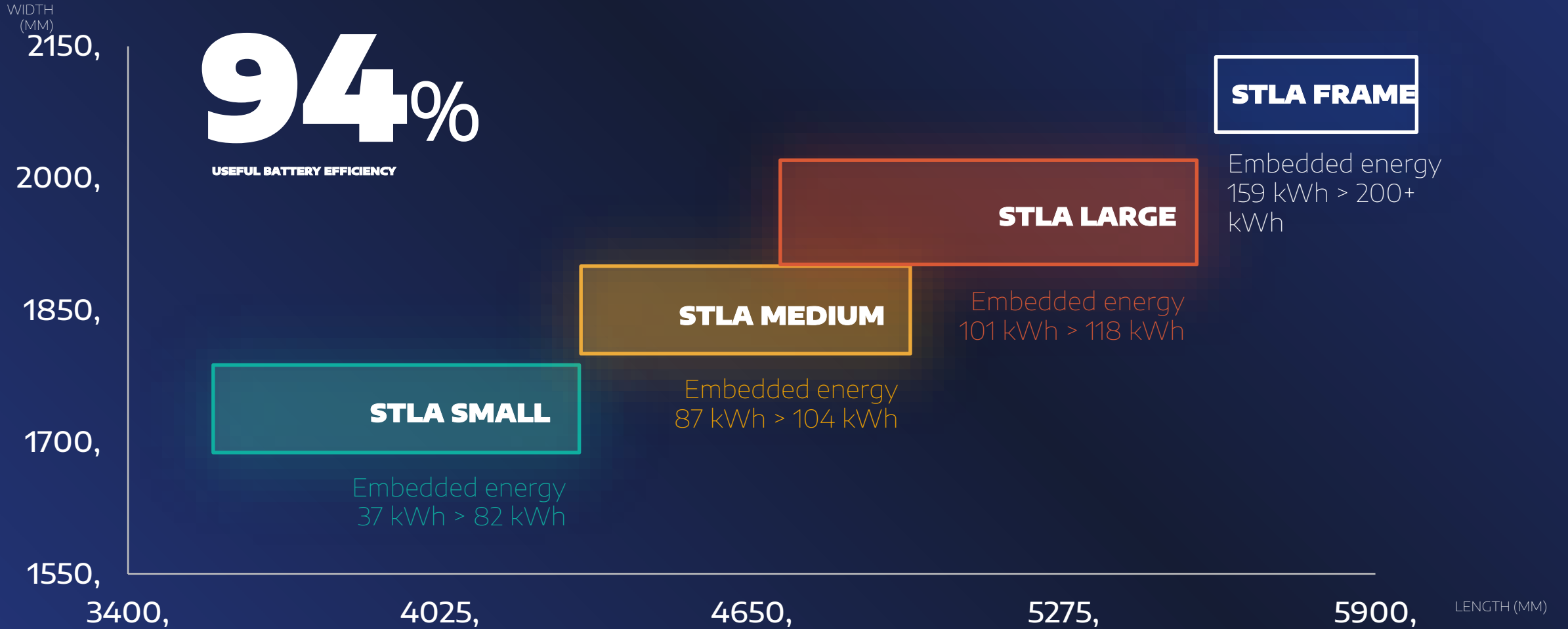


1 BODY ON FRAME

# FLEXIBILITY

## HIGH LEVEL OF FLEXIBILITY

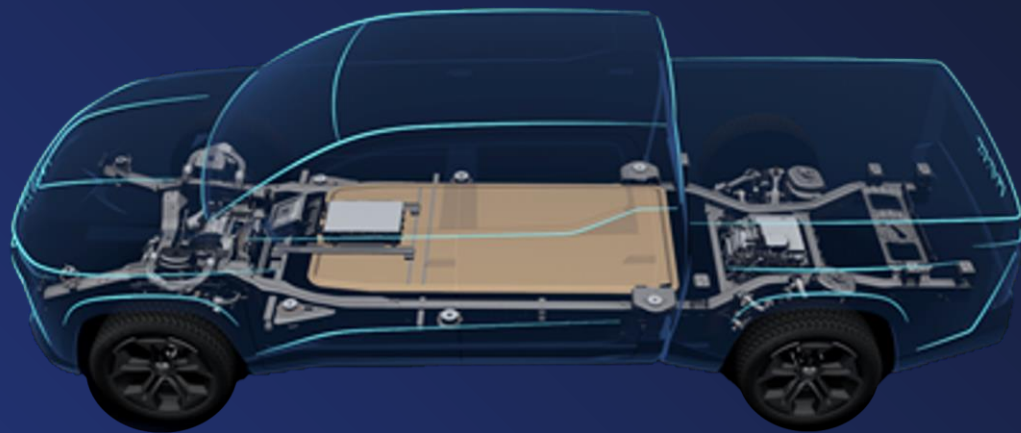
WITHIN EACH PLATFORM WITH OPTIMAL EFFICIENCY



# FRAME ~~STLA~~ FRAME PLATFORM

A NEW CHOICE OF ELECTRIC POWER FOR TRUCK CUSTOMERS TO COME...

**BEV**



**REPB**

**Range Electric Paradigm Breaker**





# PLATFORM

## 4 PLATFORMS FIT TO SCALE

up to **2** million

Vehicles / Platform / Year

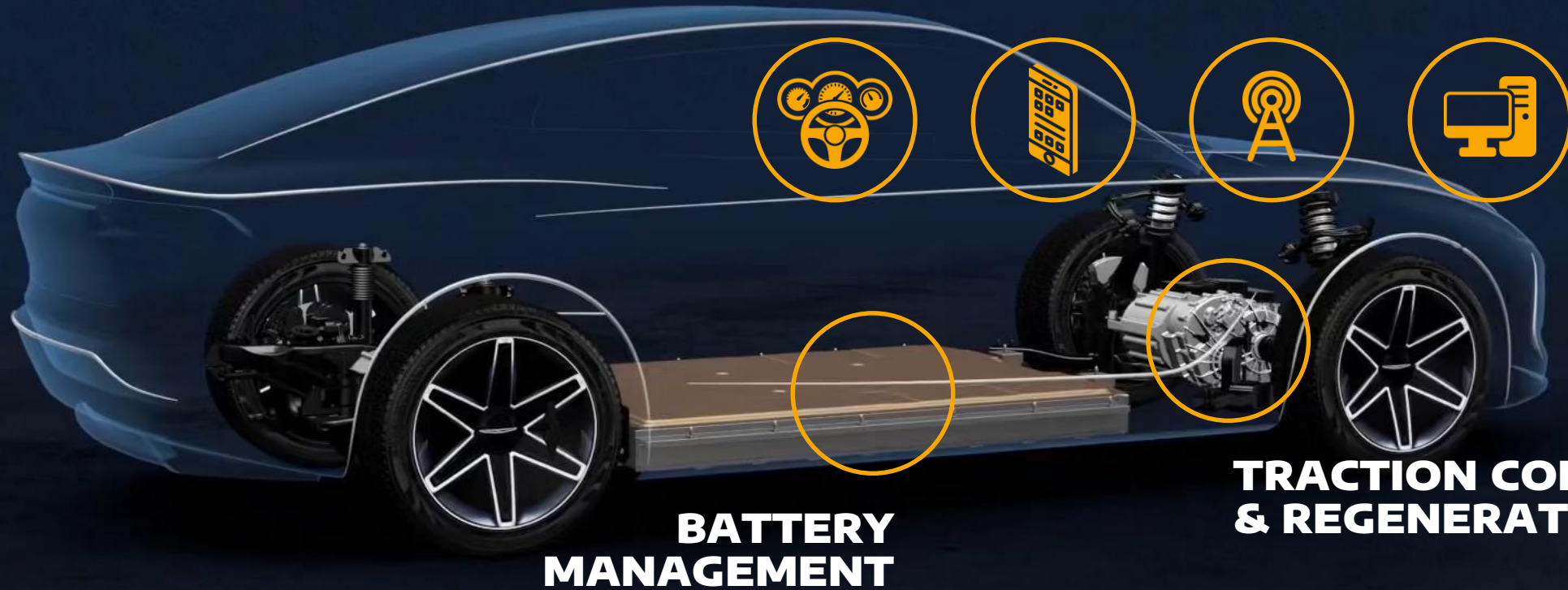




# MASTERING SOFTWARE

# SOFTWARE TO SUPPORT ENERGY EFFICIENCY, CHARGING AND BEV SERVICES

## COCKPIT & REMOTE CONTROL



**BATTERY  
MANAGEMENT**

**TRACTION CONTROL  
& REGENERATION**

# VIRTUOUS

## VIRTUOUS CYCLE OF SW STRATEGY

**ATTRACTIVE & FLUID  
CUSTOMER EXPERIENCES**

**SMART DATA & AI LEVERAGE**

**12 MILLION**

**ACTIVE CONNECTED VEHICLES AS OF 2021**

**FREQUENT OTA UPDATES**

**15+ MILLION**

**OTA UPDATES BY 2023**



# ePOWERTRAIN

# 3-IN-1 OPTIMAL INTEGRATED 3-IN-1 ELECTRIC DRIVE MODULE

OFFSET & COAXIAL ARCHITECTURES

EDM #1  
**70 kW**  
**400 V**

EDM #2  
**125 - 180 kW**  
**400 V**

EDM #3  
**150 - 330 kW**  
**400/800 V**

**SCALABLE DESIGN**

**COMPACT**

**HIGH LEVEL OF REUSE**

**Driveline Flexibility:**  
**FWD,**  
**RWD,**  
**AWD,**  
**and 4Xe**

# INVERTER

## SCALABLE INVERTER

EDM #1

EDM #2

EDM #3

EDM FAMILY/POWER

70kW

125 - 180kW

150 - 330kW

BUS VOLTAGE

400 V

400 V

400/800 V

PHASE CURRENT

450 TO 750A RMS @400V  
350 TO 600A RMS @800V

POWER DEVICES,  
SELECTABLE



SI IGBT

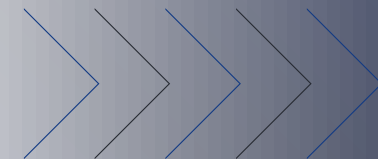


SI, SIC IGBT



SI, SIC IGBT

IN HOUSE  
CONTROL BOARD



# ALL PI PLATFORMS

## 3 SCALABLE EDM SOLUTIONS

TO COVER ALL PLATFORMS



EDM #1  
70 kW

STLA SMALL



STLA MEDIUM

EDM #2  
125-180kW



STLA LARGE

EDM #3  
150-330 kW

STLA FRAME

**PERFORMANCE**

**DRIVELINE FLEXIBILITY**

**EFFICIENCY**

**COST EFFECTIVE**

**GLOBAL MANUFACTURING FOOTPRINT**

Europe based Production with Npe\*  and Suppliers Partners

NA and China Production inside Stellantis and Supplier Partners

\* Stellantis and NIDEC JV





# BATTERY

# DUAL

## A DUAL CHEMISTRY STRATEGY TO SERVE ALL OUR CUSTOMERS

	<b>NiCo FREE</b>	<b>Ni BASED</b>
Cathode active material on Al foil	Fe – Mn - x	Ni - Mn - y
Anode active material on Cu foil	Graphite Carbon	
Energy Density at cell (Wh/L)	<b>400 – 500 Wh/L</b>	<b>600 – 700 Wh/L</b>
Pack configuration 2024	Cell-To-Pack	One unique module-based
Pack configuration 2026	<b>One unique Cell-To-Pack design</b>	
Cost (€/kWh)	<b>- 20%</b>	Reference

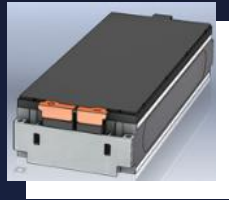
INTRODUCTION OF 1<sup>ST</sup> COMPETITIVE SOLID STATE IN 2026 BY REUSING INDUSTRIAL ASSETS

# DESIGN

## DESIGN EFFICIENCY FOR MORE COMPETITIVENESS



OTHER MOST  
COMPETITIVE  
CELLS SUPPLIERS



CELLS  
& MODULES

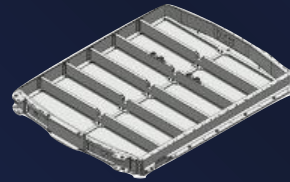
**COST COMPETITIVE  
CELLS & MODULES**

**> 40%**

SAVINGS 2024 VS. 2020

# DESIGN

## DESIGN EFFICIENCY FOR MORE COMPETITIVENESS



HOUSING  
& PACK ASSEMBLY

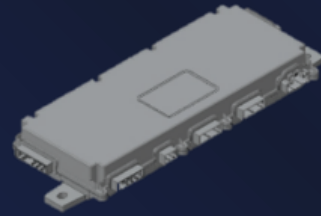
**THE CUTTING EDGE  
OF EFFICIENCY**

**> 40%**

SAVINGS 2024 VS. 2020

# DESIGN

## DESIGN EFFICIENCY FOR MORE COMPETITIVENESS



BATTERY MANAGEMENT  
SYSTEM

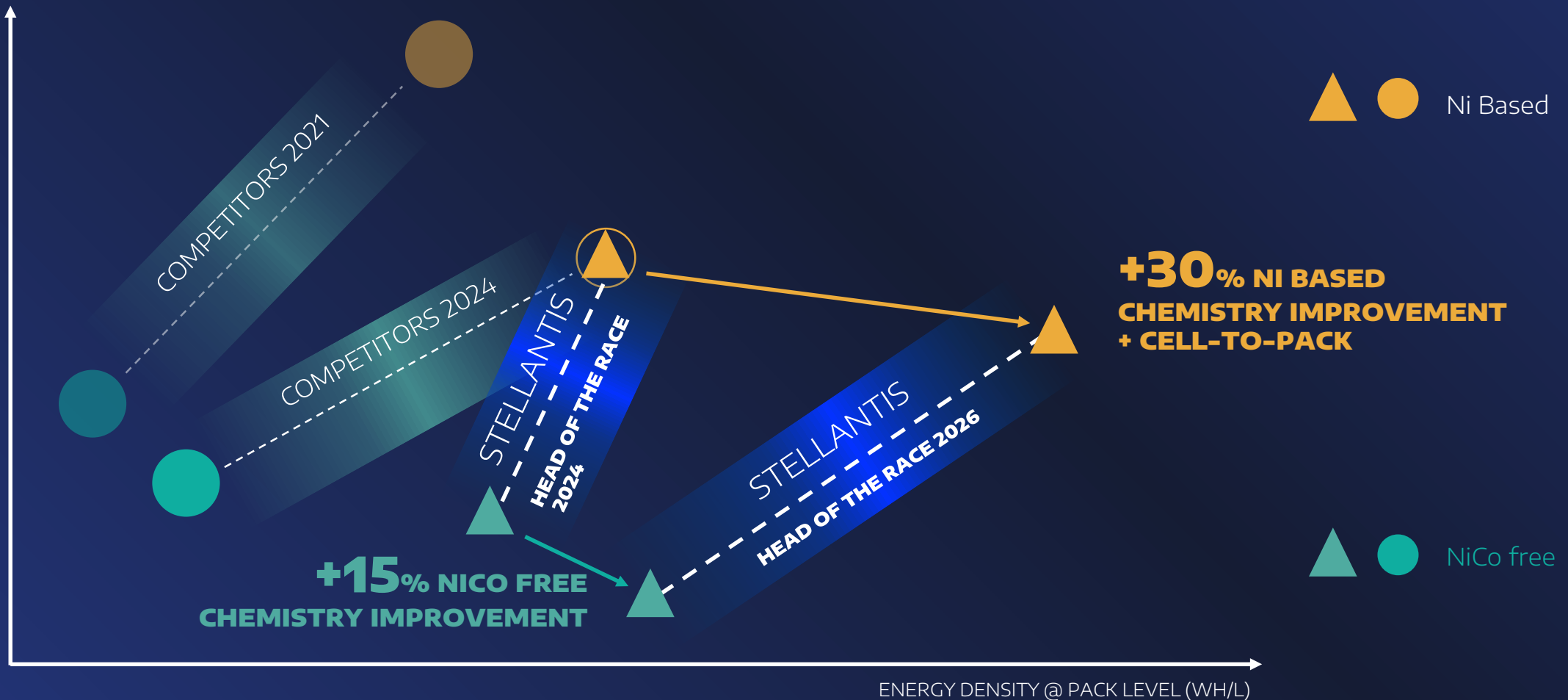
**THE USEFUL ENERGY  
IN REAL LIFE**

**4%**

SAVINGS

# LEADING COMPETITIVENESS

COST @ PACK LEVEL (€/KWH)



ENERGY DENSITY @ PACK LEVEL (WH/L)

A scenic landscape featuring snow-capped mountains in the background, a calm lake in the middle ground, and a winding road in the foreground. The road is illuminated with glowing green light trails, suggesting a path or journey. The overall color palette is cool, with blues and greys, and a soft, hazy atmosphere.

# THE ECOSYSTEM

# TAKE CARE OF OUR CUSTOMERS IN A SUSTAINABLE WAY



## EASY

Charging solutions



## SUSTAINABLE

Battery lifecycle



## AVAILABLE

Guarantee supply of EV components  
& raw materials

POSITIONING STELLANTIS  
ON THE VALUE CHAIN OF A

**HIGHLY PROFITABLE**

**MARKET**





A scenic landscape featuring snow-capped mountains in the background, a calm lake in the middle ground, and a winding road in the foreground. The road is illuminated with glowing green light trails, suggesting a path or journey. The sky is a soft, hazy blue, and the overall scene is serene and majestic.

# CHARGING SERVICES

# EXPERIENCE

**END-TO-END CHARGING AND ENERGY SOLUTIONS  
PROVIDING THE BEST CUSTOMER EXPERIENCE**

# 1

**OFFERING  
360° CHARGING  
SOLUTIONS**

FOR PRIVATE,  
BUSINESS AND FLEET  
CUSTOMERS



# 2

**PROVIDING  
DAY TO DAY  
SMART CHARGING  
OFFERS**

WITH GREEN ENERGY

# 3

**SUPPORTING  
CUSTOMER  
EXPERIENCE**

WITH SPECIFIC TAILORED  
MADE SOLUTIONS



**JEEP SOLAR CHARGER**

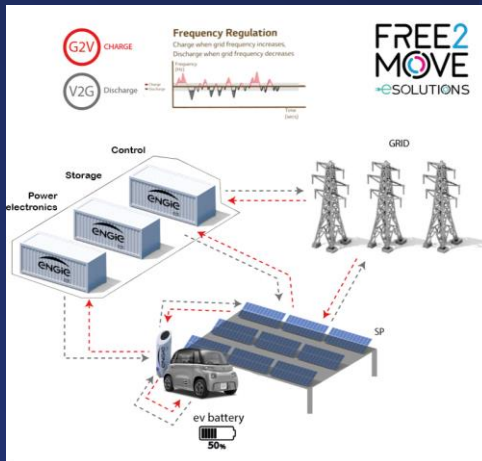


# EXPERIENCE

**END-TO-END CHARGING AND ENERGY SOLUTIONS  
PROVIDING THE BEST CUSTOMER EXPERIENCE**

# 4

**BEING AT THE CUTTING EDGE**  
OF THE FUTURE  
OF SMART GRID  
SOLUTIONS



# 5

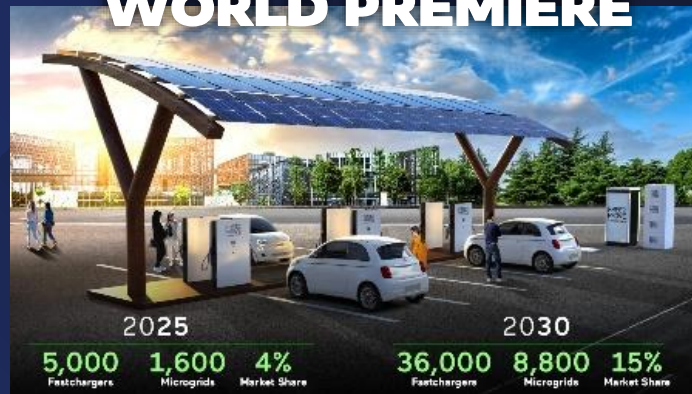
**LAUNCHING A UNIQUE FAST CHARGING NETWORK:** ENABLED BY RENEWABLES, ENERGY STORAGE AND 100% GRID INTEGRATED



# 6

**SIMPLIFYING YOUR eMOBILITY**  
EVERYWHERE IN  
THE WORLD

## WORLD PREMIERE



# WORLD PREMIERE FAST-CHARGING NETWORK

THE LARGEST  
SOUTHERN EUROPEAN  
EV FASTCHARGING  
NETWORK

THE LARGEST  
VIRTUAL POWER PLANT  
WORLDWIDE

INTEGRATED WITH  
SOLAR POWER  
AND ENERGY STORAGE

100% VEHICLE-TO-GRID  
PROVIDING GRID SERVICES  
TO THE EUROPEAN GRID



2025

**+1,500** Locations

**~5,000** Fastchargers

2030

**~9,000** Locations

**+35,000** Fastchargers

**FREE2  
MOVE**  
eSOLUTIONS

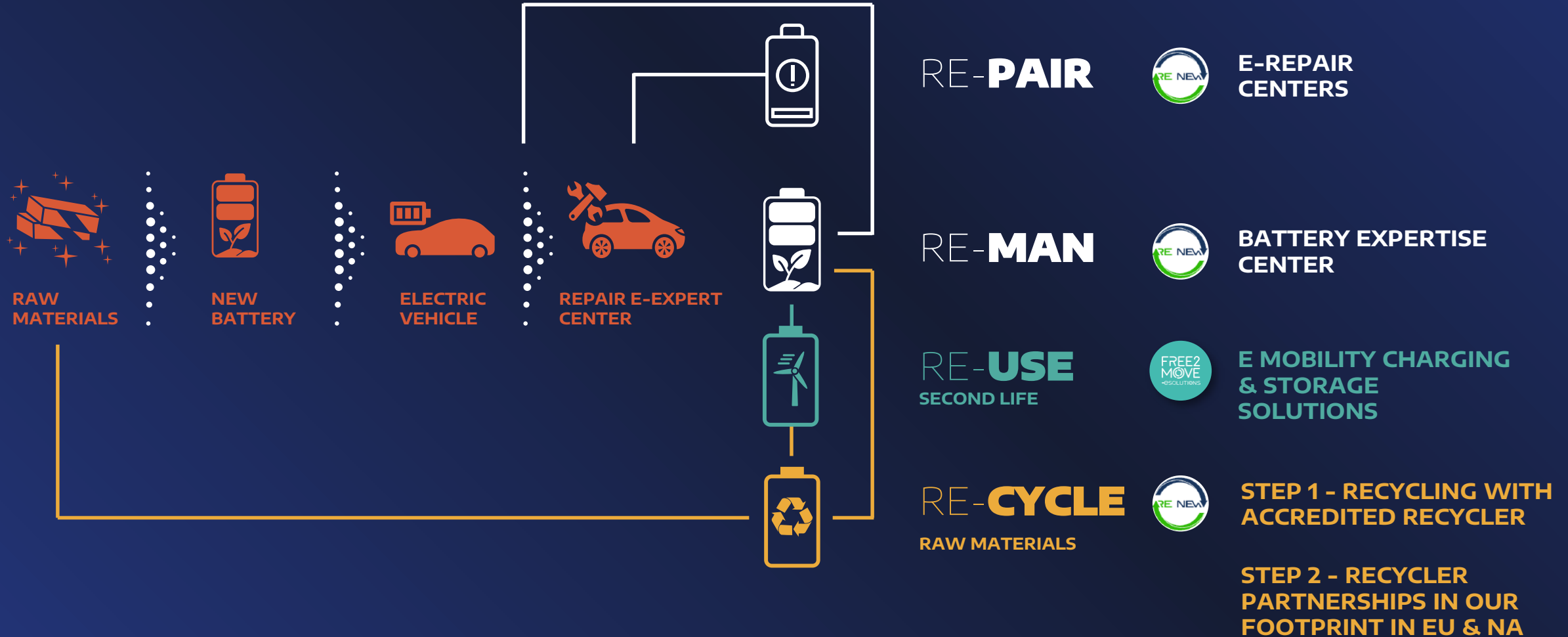
**STELLANTIS**

**ENGIE**  
eps

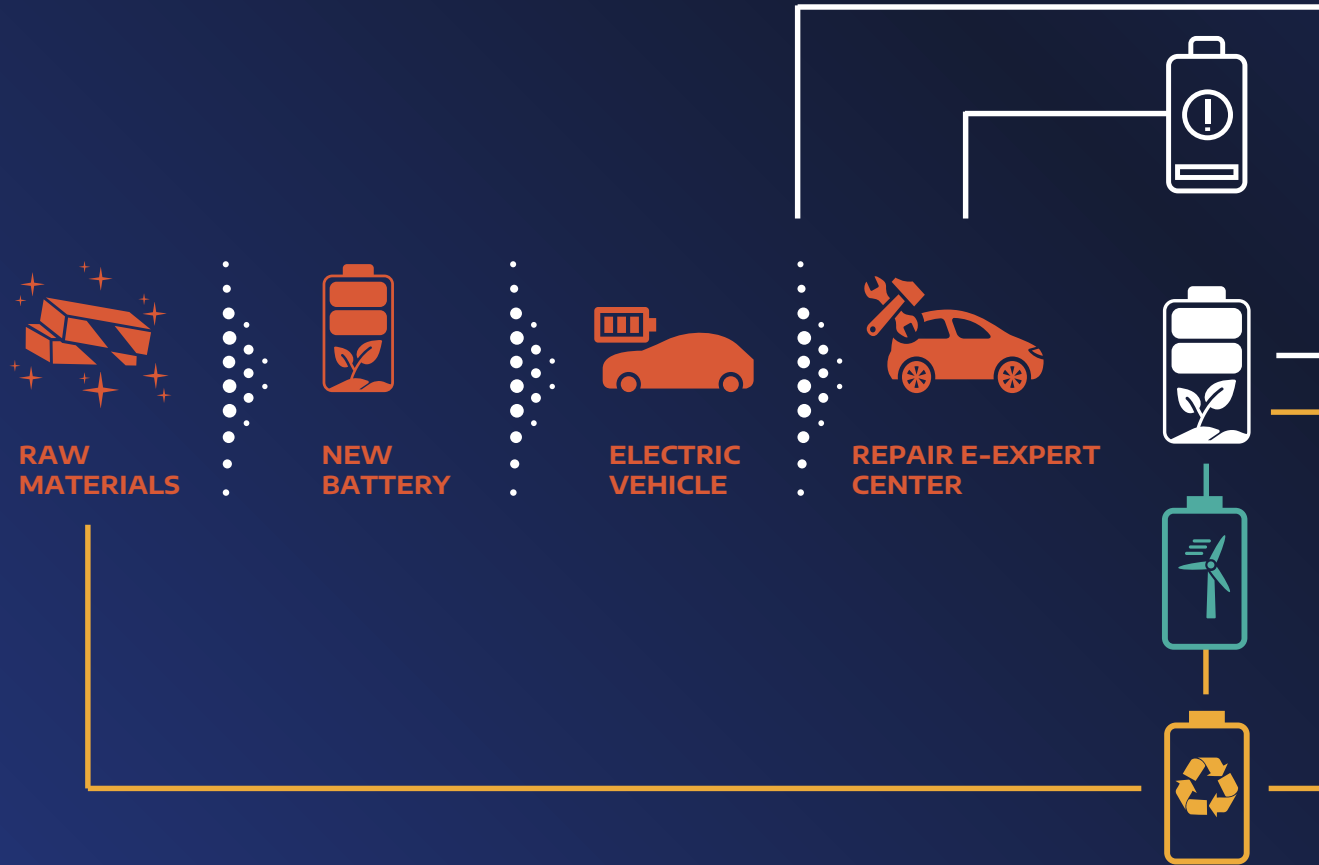
A scenic landscape featuring snow-capped mountains in the background, a calm lake in the middle ground, and a winding road in the foreground. The road is illuminated with glowing green light trails, suggesting an electric vehicle's path. The sky is a soft, hazy blue and pink, indicating dawn or dusk. The overall mood is serene and futuristic.

# BATTERY REPAIR & REUSE

# SUSTAINABLE BATTERY MANAGEMENT: FULL CIRCULAR STRATEGY



# SUSTAINABLE BATTERY MANAGEMENT: FULL CIRCULAR STRATEGY



RE-PAIR



E-REPAIR CENTERS

RE-MAN



BATTERY EXPERTISE CENTER

RE-USE  
SECOND LIFE



E MOBILITY CHARGING & STORAGE SOLUTIONS

RE-CYCLE  
RAW MATERIALS



VOLUME GROWTH IN EUROPE

YTD 2021	100
BY 2030	5000
BY 2035	>500,000

A scenic landscape featuring snow-capped mountains in the background, a calm lake in the middle ground, and a winding road in the foreground. The road is illuminated with glowing green light trails, suggesting a path or journey. The overall color palette is cool, with blues and greys, and a soft, hazy atmosphere.

# BATTERY SUPPLY



# STRATEGY

## SUPPLY STRATEGY

**2025**

**130+ GWh**

**3 GIGAFACTORIES**  
(EU+NA)

**2030**

**260+ GWh**

**5+ GIGAFACTORIES**  
(EU+NA)

SUPPLIERS

ACC  
+ CONTRACTS WITH CATL,  
BYD, SVOLT, SAMSUNG, LGES

ACC  
+ BEST IN CLASS SUPPLIERS



**80+ GWh**

**170+ GWh**



**50+ GWh**

**90+ GWh**

# AVAILABILITY

## GUARANTEEING OUR CUSTOMER'S DEMAND BY SECURING EV AVAILABILITY

**UP**  
STREAM

**MID**  
STREAM

**DOWN**  
STREAM

MINING

REFINING

PRECURSOR

ANODE/CATHODE

CELL/MODULE

PACK



**1 INITIATIVE FOR DIRECT « OFF-TAKE » CONTRACT WITH LITHIUM GEOTHERMAL BRINE PARTNERS US & EU**

**2 SUPPLY CONTRACT SECURITIZATION BY TIER 1 BATTERY SUPPLIERS FOR ANODE/CATHODE**

**3 RECYCLED RAW MATERIAL ACCESS BY SETTING UP PARTNERSHIP WITH RECYCLERS**

A nighttime photograph of a city skyline, likely New York City, viewed from a bridge. The sky is dark blue with some clouds. The city lights are visible, including the Empire State Building and other skyscrapers. In the foreground, there are light trails from traffic on the bridge, with orange and red trails on the left and blue and white trails on the right. The bridge's suspension cables are visible in the upper left.

# THE FINANCIALS

# GROW EAST

## STELLANTIS LEV MIX\* EXPECTED TO GROW FAST



2021 14%

4%

2030 70%+

40%+

\* Forecasted LEV mix on total Stellantis passenger car and light-duty truck sales

# INVESTMENTS

## INVESTMENTS FOCUSED ON NEW TECHNOLOGIES

PLANNED TOTAL INVESTMENT\* IN :

**ELECTRIFICATION**

**SOFTWARE**

---

**> €30B** FOR 2021-2025

STELLANTIS TARGETS  
TO CONTINUE TO BE

**30%**

**MORE EFFICIENT**  
THAN THE INDUSTRY\*\*

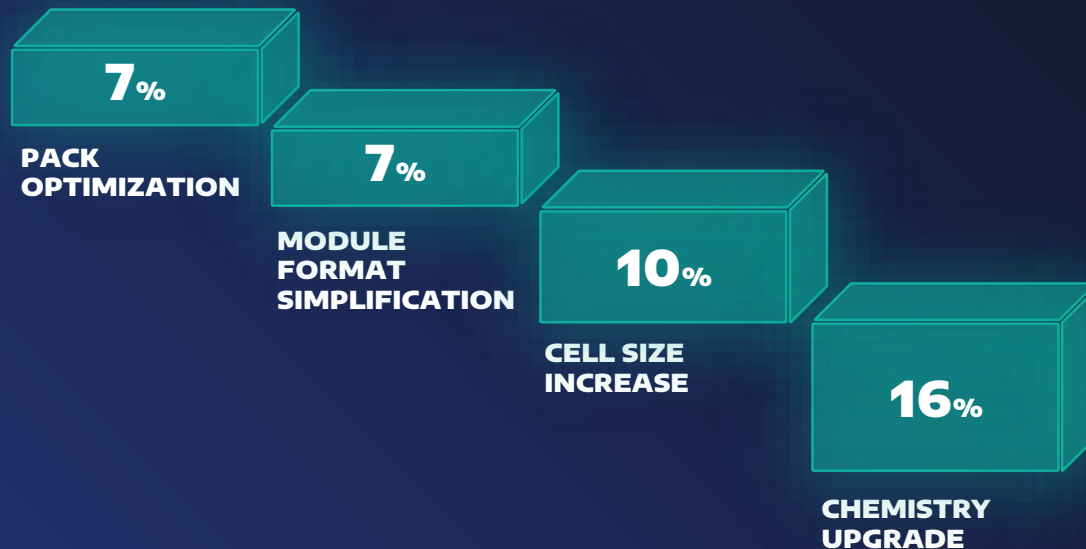
\* Includes all consolidated Capex and R&D spending, as well as equity investments made in JVs to fund their activities

\*\* Simple aggregation of FCA and PSA (excluding Faurecia) Capex plus R&D spend as a percentage of Industrial Revenues compared to the average of 6 large OEM competitors over the period 2017 – 2020

# REDUCE

**REDUCE BATTERY PACK COST\* BY >40% BY 2024**

## TARGETING



**Initial**

**>40%**

**REDUCTION  
BY 2024 VS. 2020**

**Further**

**>20%**

**REDUCTION  
BY 2030 VS. 2024**

\* Nickel based battery in €/kWh

# AOI MARGINS

## TARGETING SUSTAINABLE DOUBLE-DIGIT AOI MARGINS MID-TERM

### OPPORTUNITIES/TAILWINDS



- Merger synergies
- LEV pricing improvement due to reduced total cost of ownership
- Reduced distribution costs
- Battery cost optimization
- Most capital efficient OEM
- New business models accretive
- Growth in China, India & Asia Pacific, Middle East & Africa and Maserati
- Break-even point reduction initiatives

**DOUBLE-DIGIT  
TARGET**

**~2026**

**~9%**

**H2 2020**

aggregated \*



### RISKS/HEADWINDS

- Product cost increases due to increased LEV mix and ICE regulations
- Lower government incentives for LEV customers
- Industry volumes under pressure
- Raw material inflation

\* Simple aggregation of FCA Adjusted EBIT and PSA (excluding Faurecia) Adjusted Operating Income as a percentage of aggregated revenues and does not reflect purchase accounting adjustments required by IFRS

EV2021  
STELLANTIS DAY

